



Wasser erleben

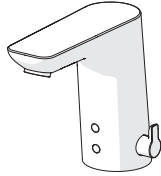
HANSALIGNA

INSTALLATION AND MAINTENANCE GUIDE



Contents

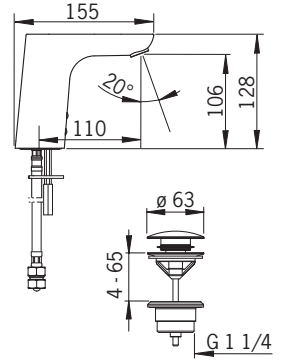
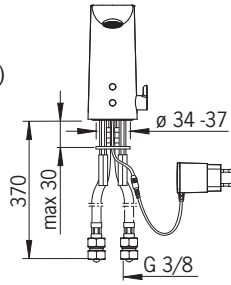
CZ Obsah	FI Sisällysluettelo	IT Indice	PT Conteúdo
DE Inhaltsübersicht	FR Sommaire	NL Inhoud	RU Содержание
DK Indholdsfortegnelse	GR Περιεχόμενα	NO Innhold	SE Innehållsförteckning
ES Contenidos	HU Tartalom	PL Spis treści	SK Obsah



Technical data	4-5
Installation	6-8
Operation.....	9
Maintenance.....	10-13
Spare parts.....	14

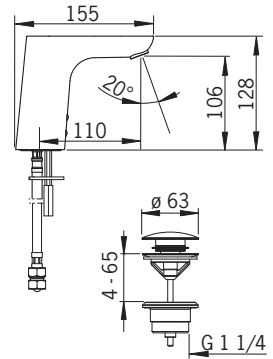
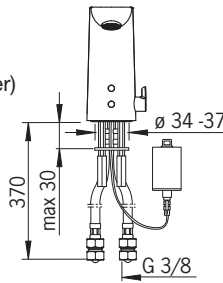
0614 2201

EN 15091
I (ISO 3822)
100 - 1000 kPa
0.1 l/s (300 kPa) (with flow controller)
200 kPa (0.1 l/s)
max. +70°C



0615 2211

EN 15091
I (ISO 3822)
100 - 1000 kPa
0.1 l/s (300 kPa) (with flow controller)
200 kPa (0.1 l/s)
max. +70°C



Technical data

CZ Technická data	FI Tekniset tiedot	IT Dati tecnici	PT Dados técnicos
DE Technische Daten	FR Données techniques	NL Technische gegevens	RU Технические данные
DK Tekniske data	GR Τεχνικά στοιχεία	NO Teknisk informasjon	SE Teknisk information
ES Datos técnicos	HU Műszaki adatok	PL Dane techniczne	SK Technické údaje

GB Protection class

CZ Třída bezpečnosti
DE Sicherheitsklasse
DK Beskyttelsesklasse
ES Grado de protección
FI Suojausluokka
FR Norme de sécurité
GR Κατηγορία προστασίας
HU Védelmi osztály
IT Protezione classe
NL Veiligheidsklasse
NO Tettthetsklasse
PL Klasa bezpieczeństwa
PT Classe de protecção
RU Степень защиты
SE Kapslingsklass
SK Trieda bezpečnosti

IP 55 / transformer IP 40

Recognition range

Rozlišovací rozsah
Sensorreichweite
Sensor område
Alcance del sensor
Tunnistusalue
Longueur du faisceau
Εύρος αναγνώρισης
Észlelési tartomány
Raggio d'azione del sensore
Sensorbereik
Følsomhetsområde
Zasięg działania
Faixa de reconhecimento
Расстояние опознавания
Känslighetsområde
Rozlišovacia vzdialenosť

optimally preset

Max. flow period

Max. doba průtoku
Max. Fließdauer
Max. løbetid
Período máximo de flujo
Max. virtusaika
Durée maximum d'écoulement
Περίοδος μέγιστης ροής
Max. áramlási periódus
Scorrimento mass.
Max. looptijd
Funksjonstid
Max czas przepływu
Período de fluxo máx.
Макс. время подачи воды
Max. flödestid
Max. doba prietoku

2 min

GB Intelligent afterflow period

CZ Čas dodatečného průtoku
DE Intelligente Nachlaufzeit
DK Intelligent efterløbetid
ES Tiempo caudal posterior
FI Älykäs jälkivirtaama-aika
FR Temporalisation de débit intelligente
GR Έξυπνη περίοδος μεταρροής
HU Intelligens utánáramlási periódus
IT Tempo di scorrimento a posteriori
NL Intelligente nalooptijd
NO Intelligent etterrenningstid
PL Intelligentne opóźnienie zamknięcia
PT Período pós-fluxo inteligente
RU Продолжительность окончат. смыва (автоматическая настройка)
SE Intelligent efterflödestid
SK Intelligentná doba po prietoku

2 s ± 1 s

Electrical Connection

Napájecí napětí
Elektr. Anschluß
Elektrisk tilslutning
Instalación eléctrica
Sähköliitännä
Connexion électrique
Ηλεκτρική σύνδεση
Elektromos csatlakoztatás
Collegamento elettrico
Electrische aansluiting
Elektrisk tilkobling
Podłączenie elektryczne
Ligação elétrica
Электропитание

El-anslutning
Elektrické pripojenie

12 VDC (0614 2201)

Battery

Monočlánek
Batterie
Batteria
Bateria
Paristo
Piles
Μπαταρία
Akkumulátor
Batterie
Batterij
Batteri
Bateria
Bateria
Батарейка

Batteri
Monočlánok

Lithium 2CR5 6V (0615 2211)

Installation

CZ Montáž

DE Montage

DK Installation

ES Montaje

FI Asennus

FR Installation

GR Συναρμολόγηση

HU Szerelés

IT Montaggio

NL Installatie

NO Montering

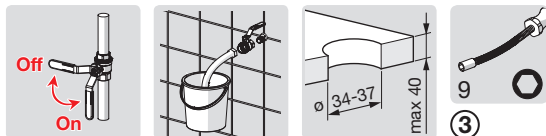
PL Instalacja

PT Instruções

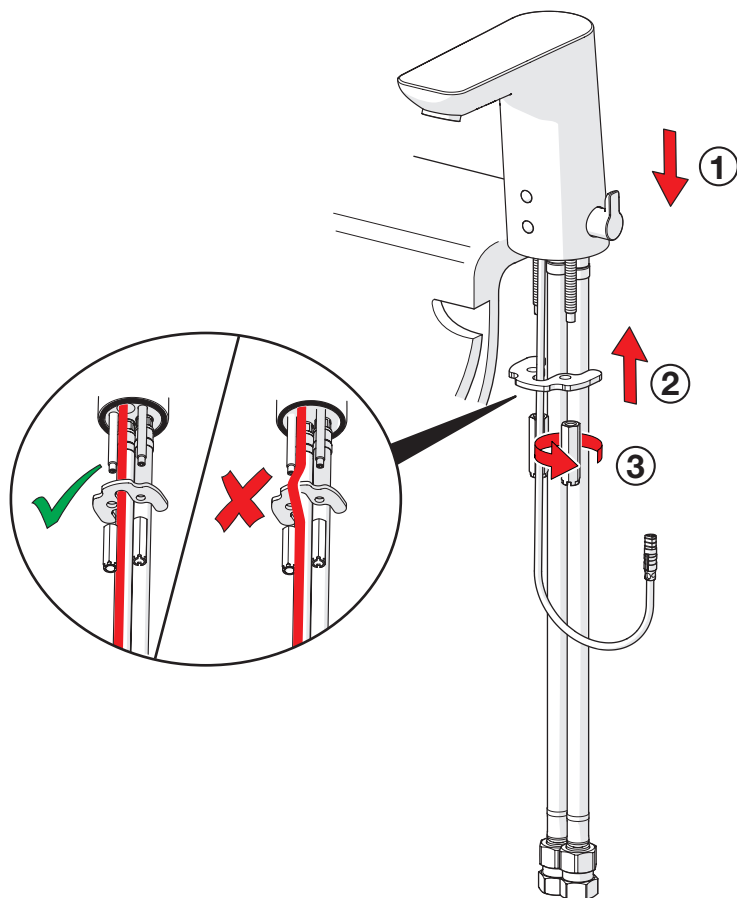
RU Установка

SE Installation

SK Inštalácia



1 0615 2211, 0614 2201



Installation

CZ Montáž

DE Montage

DK Installation

ES Montaje

FI Asennus

FR Installation

GR Συναρμολόγηση

HU Szerelés

IT Montaggio

NL Installatie

NO Montering

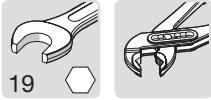
PL Instalacja

PT Instruções

RU Установка

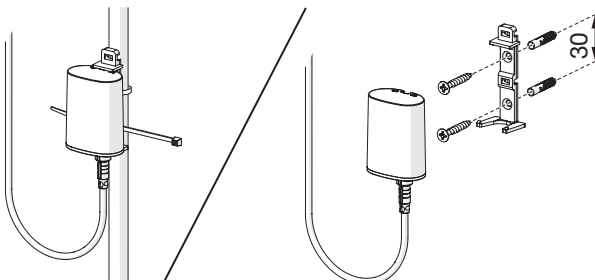
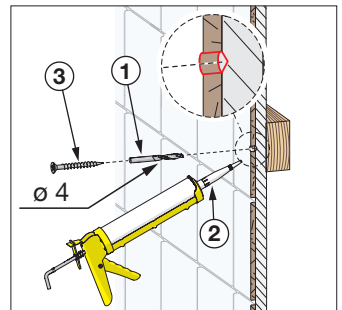
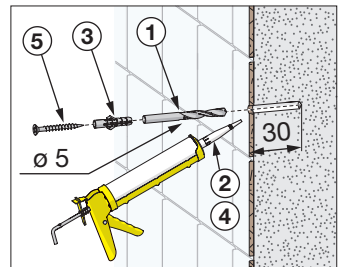
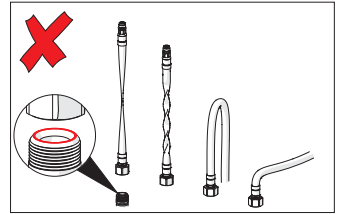
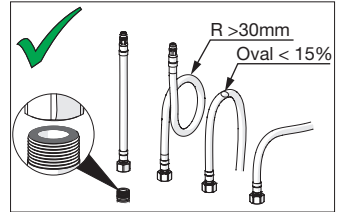
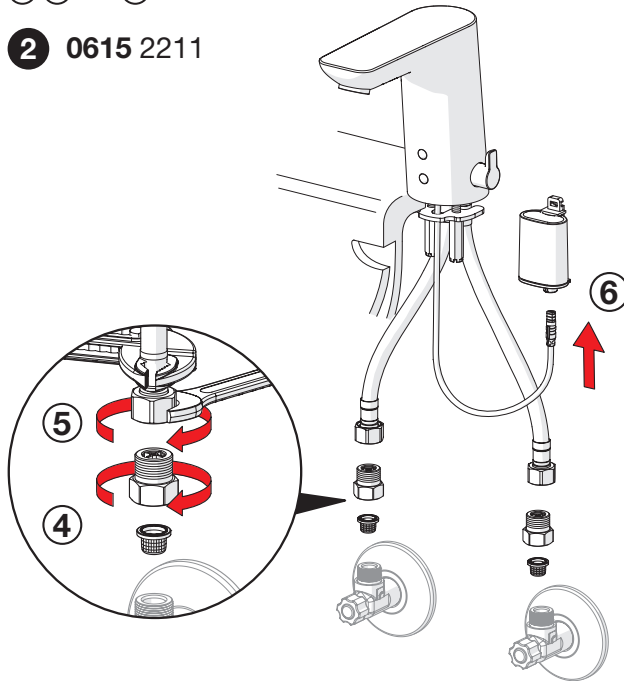
SE Installation

SK Inštalácia



4 5 5

2 0615 2211



Installation

CZ Montáž

DE Montage

DK Installation

ES Montaje

FI Asennus

FR Installation

GR Συναρμολόγηση

HU Szerelés

IT Montaggio

NL Installatie

NO Montering

PL Instalacja

PT Instruções

RU Установка

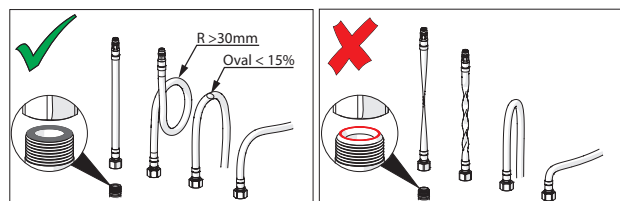
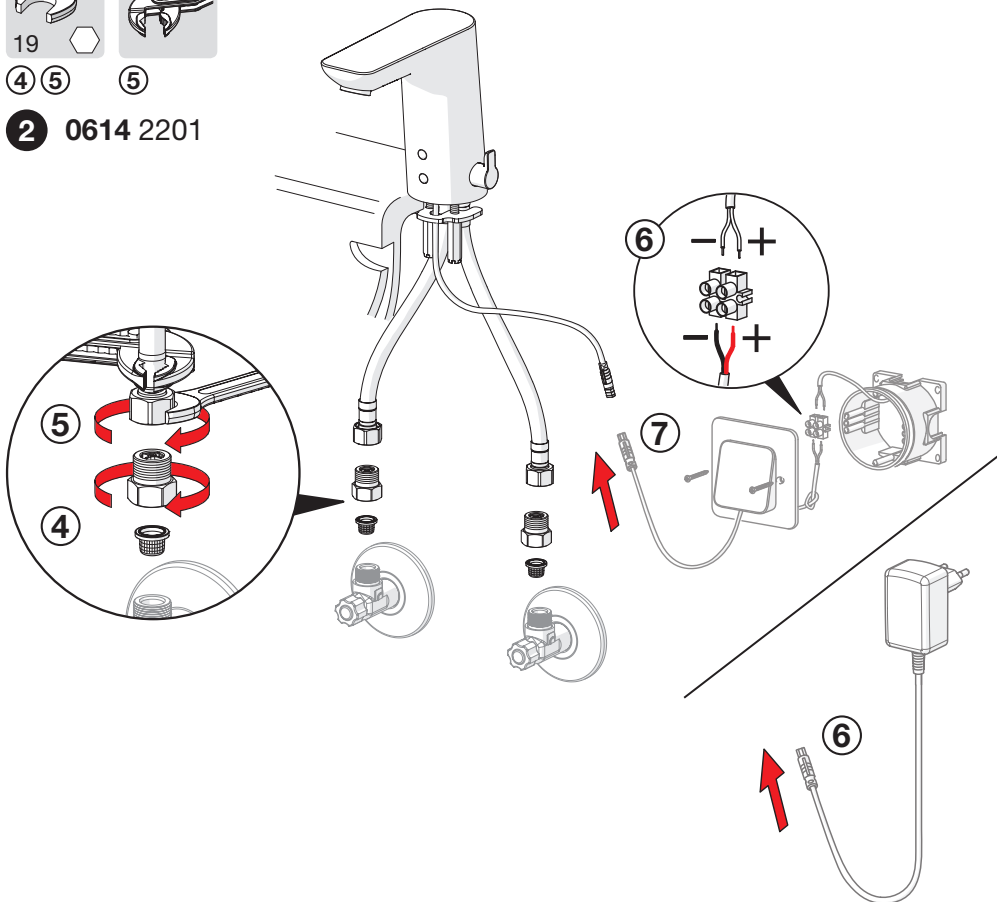
SE Installation

SK Inštalácia



④ ⑤ ⑤

② 0614 2201



Operation

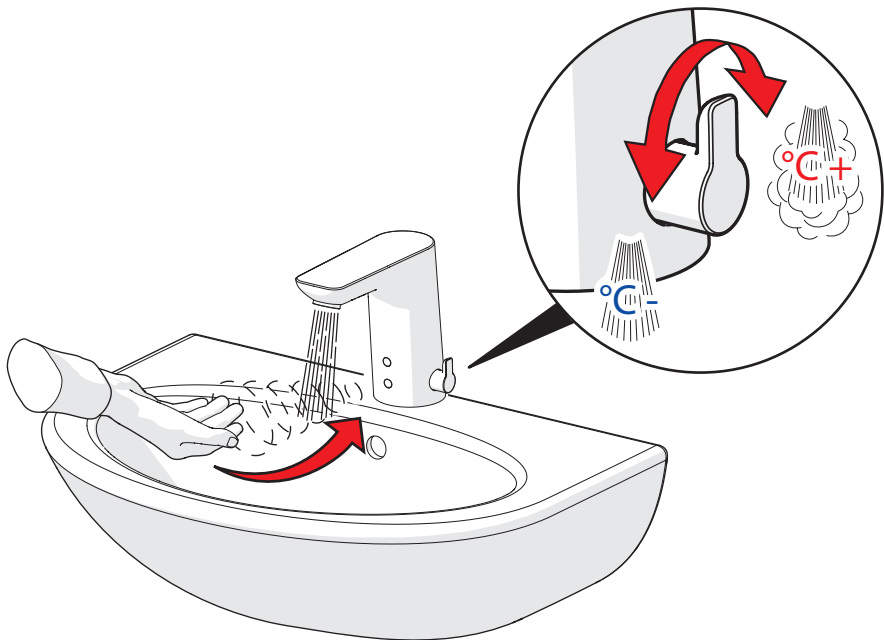
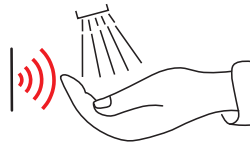
CZ Funkce
DE Funktion
DK Betjening
ES Servicio

FI Toiminta
FR Utilisation
GR Λειτουργία
HU Üzemeltetés

IT Funzionamento
NL Bediening
NO Funksjon
PL Działanie

PT Funcionamento
RU Принцип действия
SE Funktion
SK Prevádzka

Automatic



Changing the battery

CZ Výměna baterie

DE Wechsel der Batterie

DK Udskiftning af batteri

ES Cambiar la batería

FI Pariston vaihto

FR Changement de la pile

GR Αλλαγή μπαταρίας

HU Az akku cseréje

IT Sostituzione della batteria

NL Batterij vervangen

NO Bytting av batteri

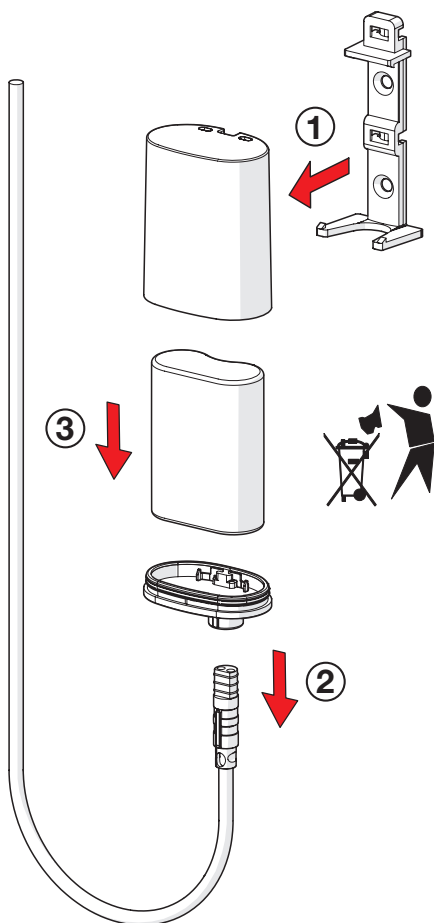
PL Wymiana baterii zasilającej

PT Substituir a bateria

RU Замена батарейки

SE Byte av batteri

SK Výmena batérie

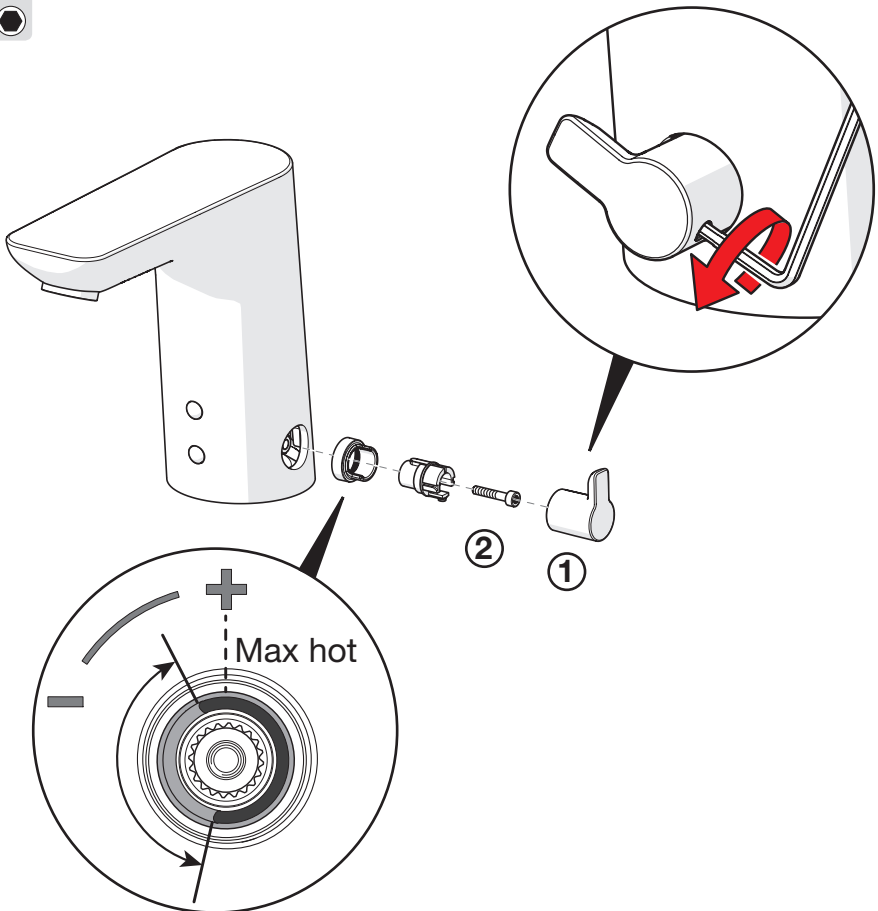


Limiting temperature

CZ Omezení teplé vody	NL Perlator vervangent
DE Temperaturbegrenzung	NO Begrenzing temperatuur
DK Forindstilling af vandets max. temperatur	PL Ograniczenie temperatury
ES Limitación de la temperatura	PT Limitar a temperatura
FI Lämpötilan rajoitus	RU Ограничение температуры в регулирующем блоке
FR Limitation de la température	SE Begränsning av vattnets max. temperatur
GR Περιορισμός θερμοκρασίας	SK Obmedzenie teploty
HU A hőmérséklet határolása	
IT Limitazione della temperatura	



① ②



Cleaning/changing the litter filters

CZ Čištění/Výměna filtrů

DE Reinigung/Wechsel der Filter

DK Rensning/udskiftning af filtre

ES Limpieza/cambio de los filtros

FI Roskasiivilöiden puhdistaminen/vaihtaminen

FR Nettoyage/changement des filtres

GR Καθαρισμός/αλλαγή φίλτρων απορριμμάτων

HU A szűrő tisztítása/cseréje

IT Pulizia/sostituzione dei filtri

NL Reinigen/veranderen van de filters

NO Rensing/bytting av filter

PL Czyszczenie/wymiana filtra

PT Limpar/substituir os filtros de resíduos

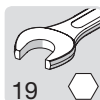
RU Очистка и замена уплотнительных фильтро

SE Rengöring/byte av smutsfilter

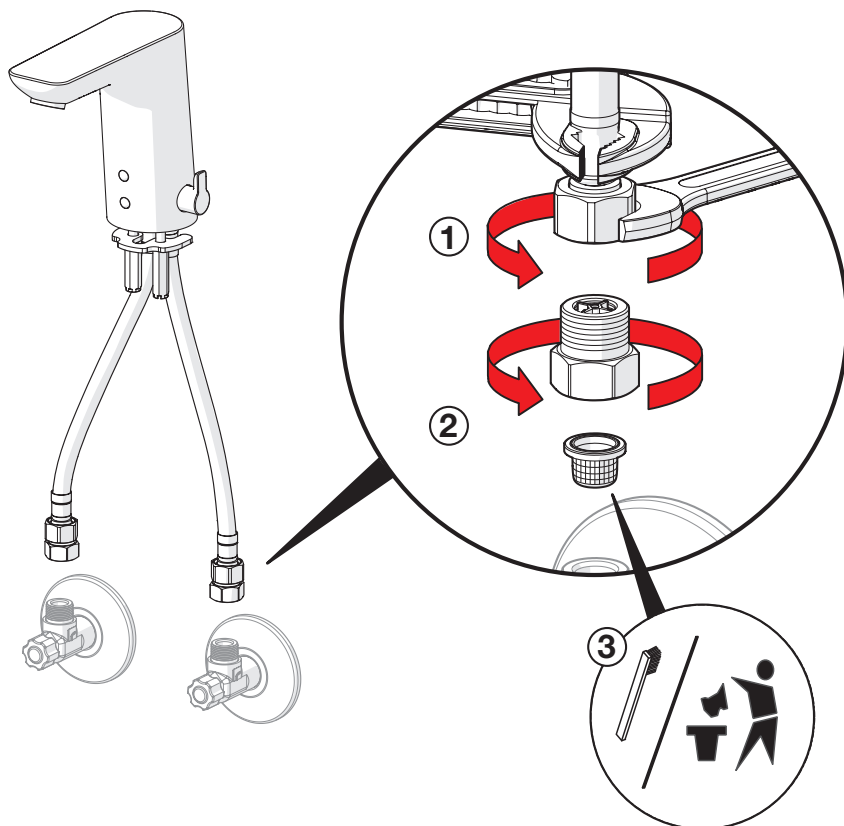
SK Čistenie/výměna odpadových filtrov



①



① ②



Cleaning the faucet

CZ Čištění baterie

DE Reinigung der Armatur

DK Rengøring af armaturet

ES Limpieza de la grifería

FI Puhdistus

FR Nettoyage du robinet

GR Καθαρισμός του βρύση

HU Takarítás a csapót

IT Pulizia della rubinetteria

NL Reinigen van de kraan

NO Rengjøring av kranen

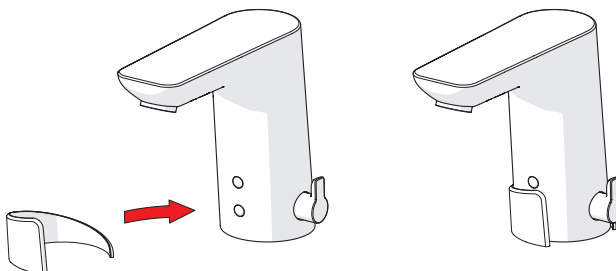
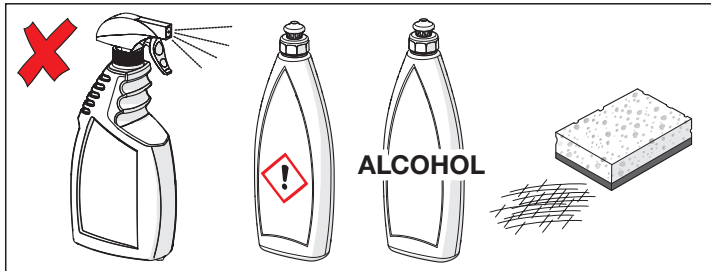
PL Czyszczenie baterii

PT Limpeza da torneira

RU Чистка смесителя

SE Rengöring av blandarna

SK Čistenie vodovodnej batérie



Spare parts

CZ Náhradní díly

FI Varaosat

NL Reserve-onderdelen

RU Запасные части

DE Ersatzteile

FR Pièces détachées

NO Reservedeler

SE Reservdelar

DK Reservedele

HU Alkatrészek

PL Części zamienne

SK Náhradné diely

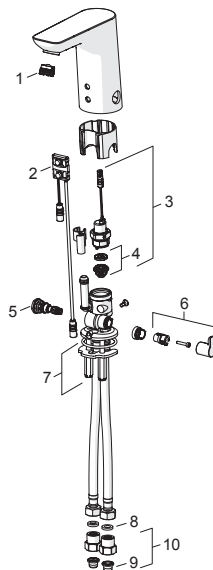
ES Piezas de recambio

IT Pezzi di ricambio

PT Peças de reposição

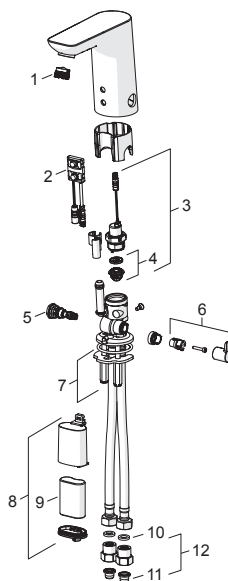
0614 2201

- 1 59 913 366
- 2 59 914 098
- 3 59 914 187
- 4 59 914 090
- 5 59 914 193
- 6 59 914 108
- 7 59 914 132
- 8 59 914 087
- 9 59 914 085
- 10 59 914 086



0615 2211

- 1 59 913 366
- 2 59 914 093
- 3 59 914 187
- 4 59 914 090
- 5 59 914 193
- 6 59 914 108
- 7 59 914 132
- 8 59 914 088
- 9 59 911 670
- 10 59 914 087
- 11 59 914 085
- 12 59 914 086



Oras Group is a powerful European provider of sanitary fittings: the market leader in the Nordics and a leading company in Continental Europe. The company's mission is to make the use of water easy and sustainable and its vision is to become the European leader of advanced sanitary fittings. Oras Group has two strong brands, Oras and Hansa.

The head office of the Group is located in Rauma, Finland, and the Group has four manufacturing sites: Burglengenfeld (Germany), Kralovice (Czech Republic), Olesno (Poland) and Rauma (Finland). Oras Group employs approximately 1400 people in twenty countries. Oras Group is owned by Oras Invest, a family company and an industrial owner.

HANSA Armaturen GmbH
P. O. BOX 81 02 40
D-70519 Stuttgart

Sigmaringer Strasse 107
D-70567 Stuttgart
Tel.: +49 711 16 14 0
Fax: +49 711 16 14 368
info@hansa.de

www.hansa.com



a member of  orasgroup